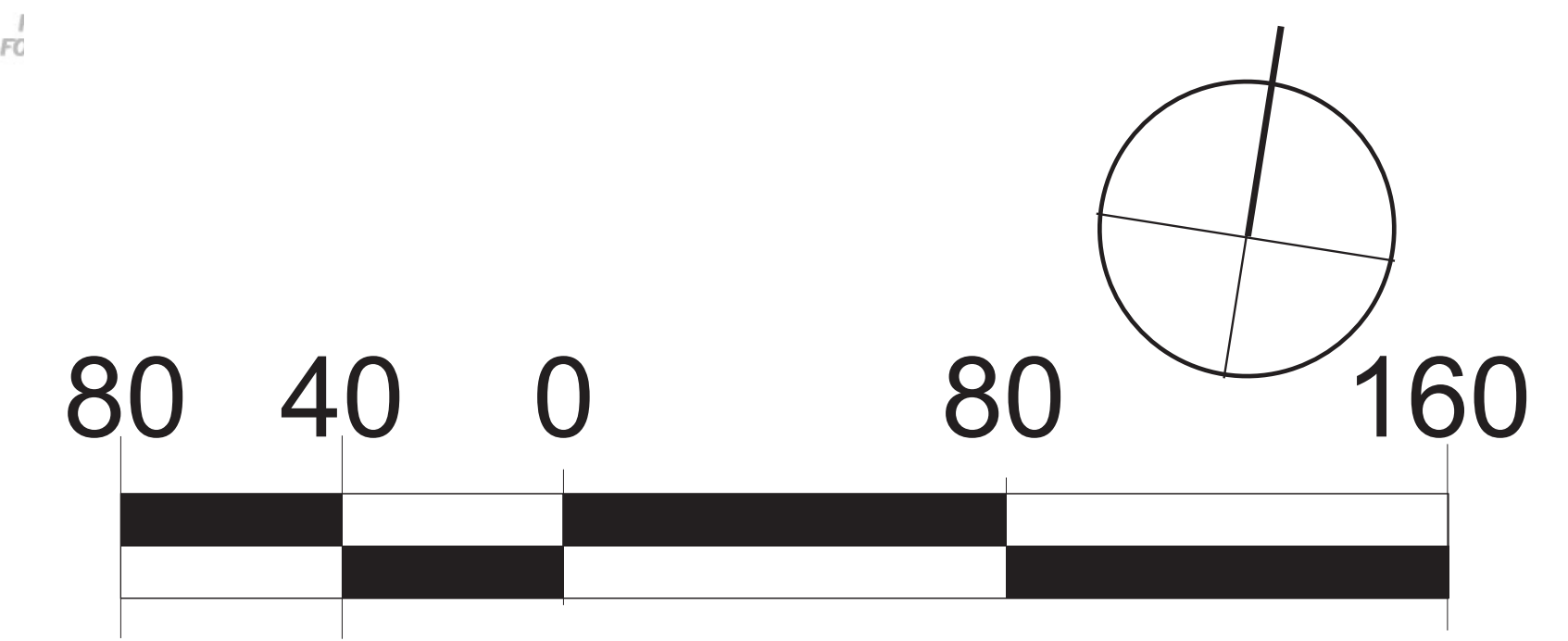


SCHEME 2 SITE SUMMARY

- NEW FACILITY BUILDING
- CONVERT TRUCK GARAGE TO COLD STORAGE
- EXISTING FENCED STORAGE ARE TO REMAIN
- RELOCATED SALT BARN
- NEW FUEL ISLAND
- NEW PARKING LAYOUT



**SCHEME 2 SUMMARY**

- CONVERT TRUCK GARAGE TO COLD STORAGE
- DEMOLITION OF REST OF BUILDING
- NEW SINGLE STORY OPERATIONS BUILDING

NEW AREAS	
TRUCK GARAGE	26800
OFFICES	5930
SHOPS	3860
MAINTENANCE	4300
STORAGE	3050
WASH BAY	875
CIRCULATION	1700
<b>TOTAL</b>	<b>46515</b>

NEW TOTAL	46515
RENOVATED COLD STORAGE	20800
	67315

